

Nelweld[®] N800i[™]
One Person Portable
1/2" (12mm) Inverter Stud Welder

Third generation inverter technology propels stud welding into the 21st century.

Energy Efficient

Thanks to the inverter saving hundreds to thousands of dollars/euros from old thyristor designs.

Weld Monitor[™]

Featuring a built-in arc energy watchdog to detect bad welds from actual process signals.

Gun Monitor[™]

Featuring a built-in gun watchdog to match gun speed and adaptively compensate for gun wear.

Cable Monitor[™]

Featuring a built-in cable and connector watchdog to detect cable wear and loose connector.

Stud Expert[™]

Choose your setting from stud diameter and reprogram using the user spreadsheet.

Pulse Waveform

Supports by reducing heat input, cutting surface contaminants and stiffening arc for out-of-position welds.

Plunge Current[™]

Saves electricity, reduces cable wear, and maintains arc energy despite gun wear.

Cold Plunge Prevention[™]

Extends arc time when stud plunge is slowed down. For example, when weld spatter gets stuck between the stud and the ferrule.

Constant Energy[™]

Delivers constant heat input despite surface coating, gun lift and flux ball variation.

Chuck Change Indicator

Alerts users to perform scheduled preventative maintenance of consumable parts.

RoHS Compliance

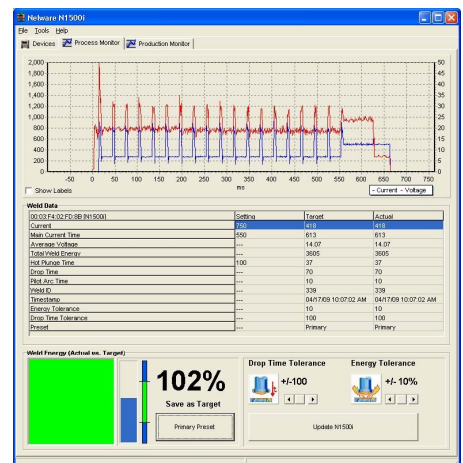
Eliminates lead and 5 other hazardous substances to protect the environment

PLC Interface

Provides connectivity to robot and PLC with a host of fieldbus networks.

Nelware[™]

Production weld quality record keeping and arc signals oscilloscope PC software.



Nelweld[®] N800i[™]
One Person Portable
1/2" (12mm) Inverter Stud Welder

Welder Specifications	N800i		
Stud Diameter	12 Gauge to 1/2" (3-12 mm)		
Welding Process	Drawn Arc, Short Cycle, Gas Arc		
Welding Current (I)	50A—800A Continuously Adjustable		
Welding Time (T)	5ms—1000ms		
Weight (welder only)	40 lbs (18kg) Without Input Cord		
Dimensions (L x W x H)	13" (33cm) x 10" (25cm) x 20.5" (52cm)		
Weld Rates	1/2" (12.7 mm)	3 Studs/Min	
	3/8" (10 mm)	6 Studs/Min	
	1/4" (6 mm)	12 Studs/Min	
Input Power	3 Phase 208-230V	50/60 Hz	30A
	3 Phase 400-460V	50/60 Hz	15A
	3 Phase 575V	50/60 Hz	15A

Additional Specifications	
Material	Steel, Stainless Steel, Aluminum, Heat-Resistant Steel, Advanced High Strength Steel
Gun	Light Duty Pinning Gun, Standard Duty NS-40
Enclosure Rating	IP23S

Options	Value
Input Voltages*	230V, 460V, 575V, and 400V CE
Power Connectors	Dinse, Camlok
Gun Connectors	Hubble, R&S, Binder, Harting
Gas Control Kit	
Nelware [™] PC Software	
Mobility Cart	
Protective Bracket	

Stanley Engineered Fastening — a division of Stanley Black & Decker — is the global leader in precision fastening and assembly solutions. Our industry-leading brands elevate what our customers create. Backed by a team of passionate and responsive problem-solvers, we empower engineers to create the future.

STANLEY ENGINEERED FASTENING FAMILY OF BRANDS

AVDEL

INTEGRA

NELSON

OPTIA

POP

STANLEY
Assembly Technologies

TUCKER