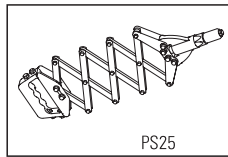
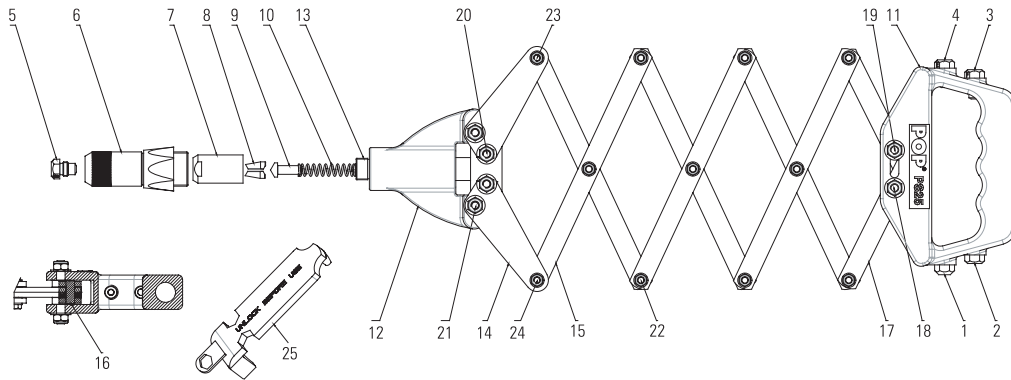


# POPSet™ PS25

# POP®

## Heavy Duty Lazy Tong Rivet Tool

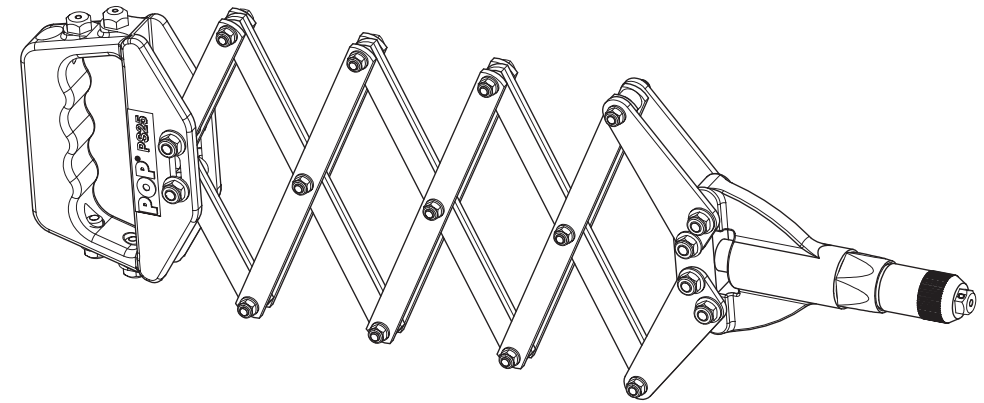
- ES** Remachadora de Eslabones de Uso Pesado
- PT** Rebitadeira Tipo Sanfona
- FR** Pince à extenseur pour rivets de structure
- DE** Hochleistungs-Scherennietgerät
- SE** Handverktyg
- DK** Robust værktøj med saksudveksling (til montering af 6,4 nitter)
- FI** Haitaripihdi - 6,4 mm saakka
- JP** 強力型リンク式リベットツール



1	DPM400-B10	1
2	DPM400-C10	1
3	DPM400-D10	1
4	DPM400-E10	1
5	DPM400-F10	1
6	FAM400-010	1
7	DPM400-018	1
8	FAM400-020	1
9	DPM400-047	1
10	DPM400-024	1
11	DPM400-003	1
12	DPM400-006	1
13	FAM400-009	1
14	DPM400-051	4
15	DPM400-389	12
16	DPM400-474	1
17	DPM400-386	4
18	FAM400-395	1
19	FAM400-396	1
20	FAM400-058	2
21	FAM400-056	2
22	FAM400-041	9
23	FAM400-392	1
24	FAM400-394	1
25	DPM400-384	1

### OPTIONAL

	Nosepiece	Part Number	Metric (mm)	Imperial (inch)
Ultra Grip®		DPM400-DUG	4,8	3/16
		DPM400-FUG	6,4	1/4
Monobolt®		DPM400-DMB	4,8	3/16
		DPM400-FMB	6,4	1/4



Nosepiece	Part Number	Metric (mm)	Imperial (inch)
<b>B</b>	DPM400-B10	3,0 - 3,2	1/8
<b>C</b>	DPM400-C10	4,0	5/32
<b>D</b>	DPM400-D10	4,8 - 5,0	3/16
<b>E</b>	DPM400-E10	6,0	-
<b>F</b>	DPM400-F10	6,4	1/4



- GB** Read the Manual
- ES** Leer el Manual
- PT** Leia o manual
- FR** Lire le manuel
- DE** Lesen Sie die Betriebsanleitung
- SE** Läs manualen
- DK** Læs manualen grundigt
- FI** Kts. huolto-ohjeet
- JP** 取扱説明書をお読みください。



- Wear Safety Goggles
- Usar Gafas de Seguridad
- Use Óculos de Proteção
- Porter des lunettes de protection
- Tragen Sie eine Schutzbrille
- Använd säkerhetsglasögon (eller glasögon)
- Anvend beskyttelsesbriller
- Käytä suoja silmälasia
- 保護めがねを着用してください。

